

Asymmetric AA

p-Bromo Derivative

File : c:\dynamax\chrom\Ap-br2.dat

Method : c:\dynamax\methods\kdr.met

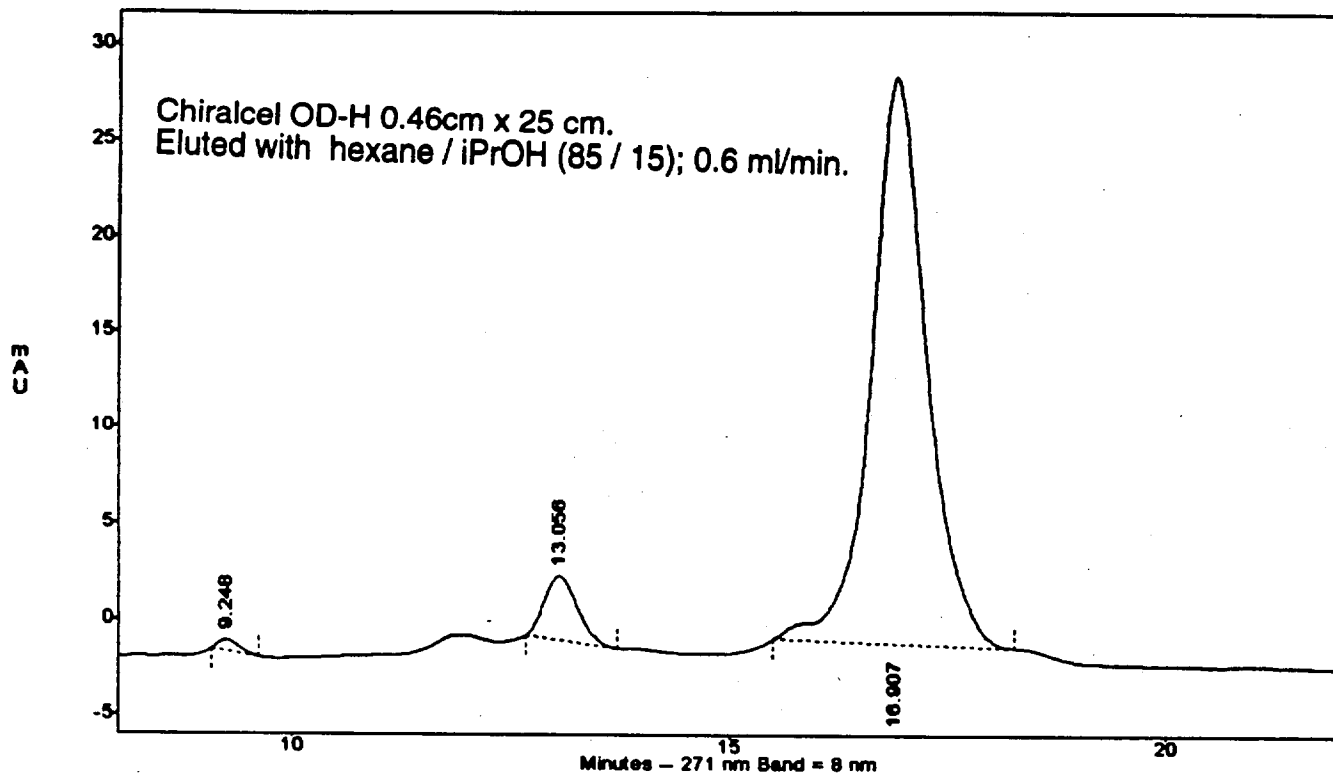
Sample ID : adampbr2

Acquired : Jun 25, 1998 14:31:17

Printed : Jun 25, 1998 14:57:08

User : panehplc

c:\dynamax\chrom\Ap-br2.dat - Channel A, PDA Channel 1

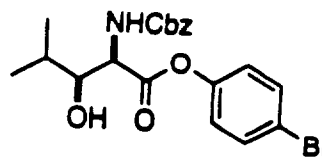


Channel A Results -- PDA Channel 1, 271 nm, 8 nm Band

Peak	Time	Area	Area %
1	5.15	76052	5.089
2	6.99	14615	0.978
3	9.25	9535	0.638
4	13.06	87725	5.870
5	16.91	1306613	87.426

Totals :

1494540 100.000

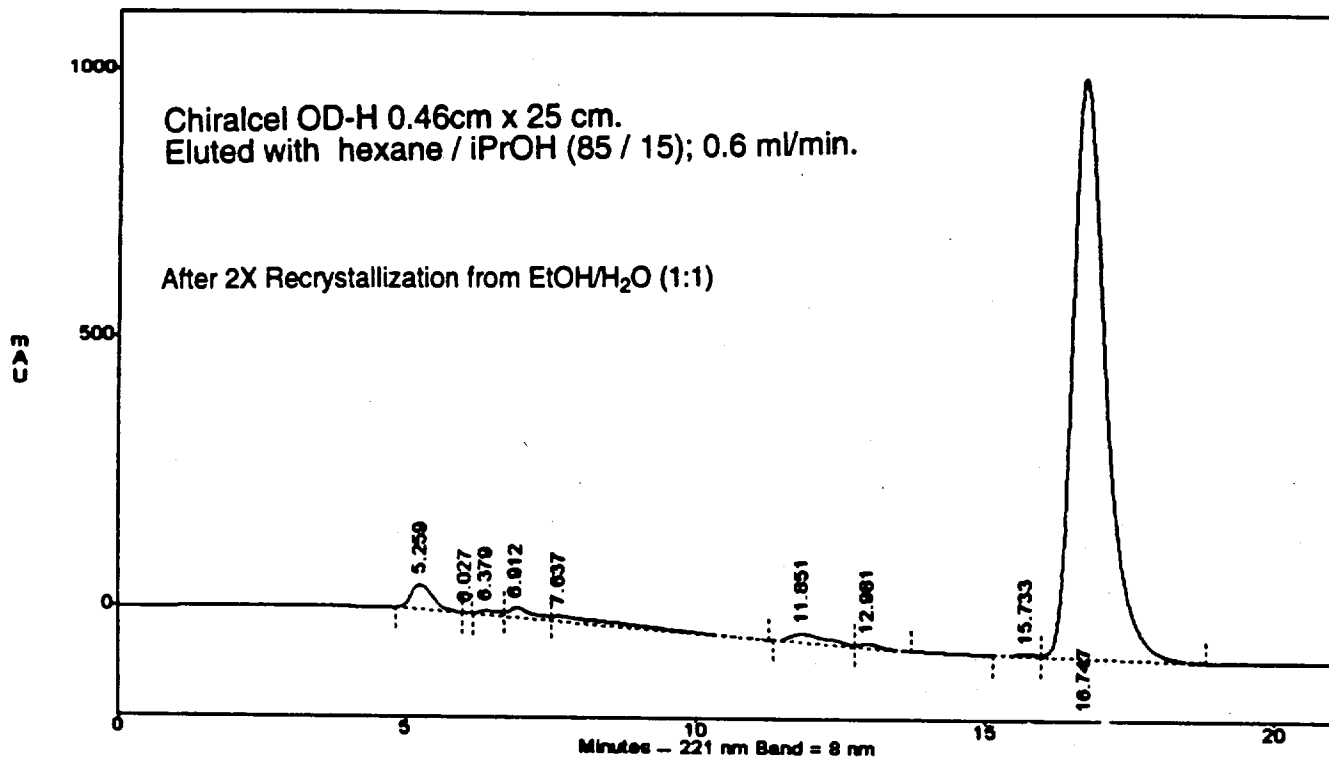
**3d**

ee = 87 %

3rd recryst

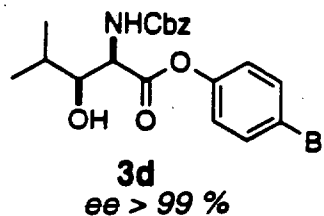
File : c:\dynamax\chrom\Am037-3.dat
 Method : c:\dynamax\methods\kdr.met
 Sample ID : AM037-3
 Acquired : Jul 17, 1998 11:04:24
 Printed : Jul 17, 1998 11:31:38
 User : panehplc

c:\dynamax\chrom\Am037-3.dat - Channel A, PDA Channel 1



Channel A Results -- PDA Channel 1, 221 nm, 8 nm Band

Peak	Time	Area	Area %
1	5.26	1221885	2.636
2	6.03	8481	0.018
3	6.38	205769	0.444
4	6.91	567373	1.224
5	7.64	976157	2.106
6	11.85	756734	1.632
7	12.98	194931	0.420
8	15.73	119114	0.257
9	16.75	42308264	91.263



Totals :
 46358708 100.000

Racemic p-Bromo Phenyl AA

Adam

File : c:\dynamax\chrom\aarac.dat

Method : c:\dynamax\methods\kdr.met

Sample ID : AAracemic

Acquired : Sep 21, 1998 17:25:05

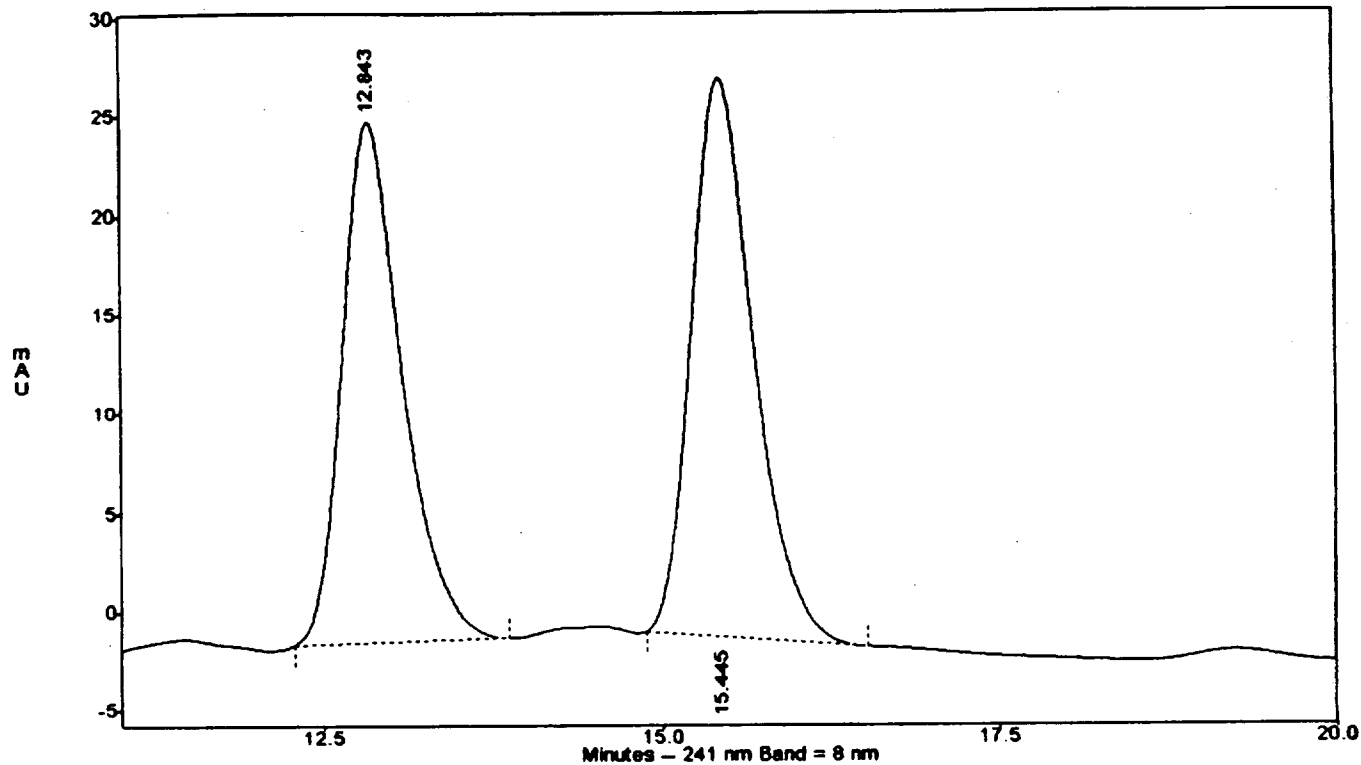
Printed : Sep 25, 1998 16:21:57

User : panehplc

Chiralcel OD-H 0.46cm x 25cm.

Eluted with hexane / iPrOH (85 / 15); 0.6 mL/min

c:\dynamax\chrom\aarac.dat - Channel A, PDA Channel 1

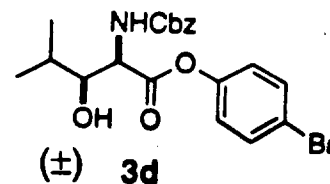


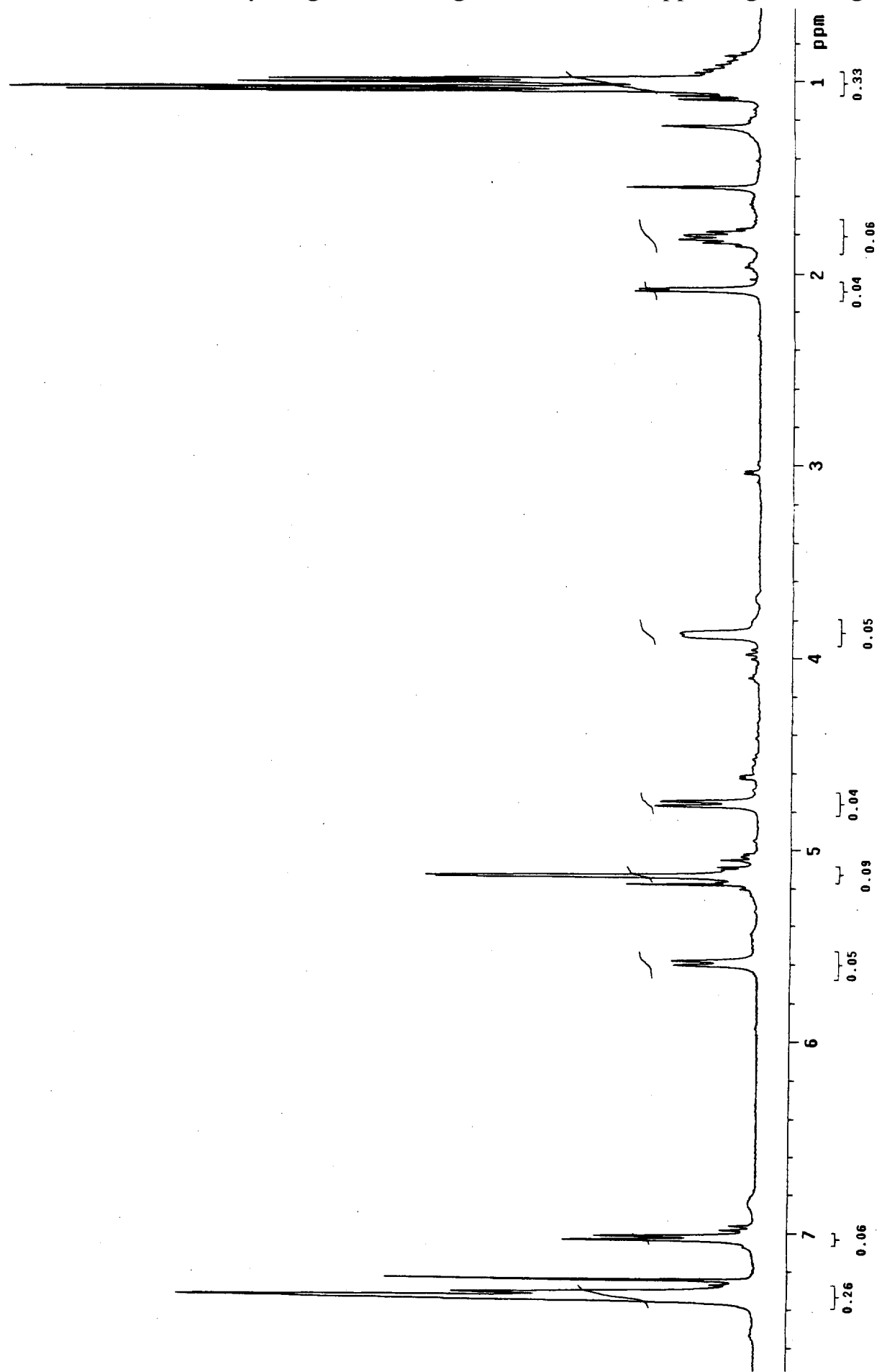
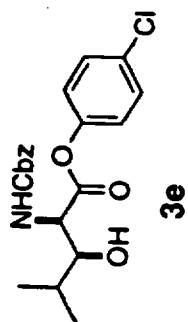
Channel A Results -- PDA Channel 1, 241 nm, 8 nm Band

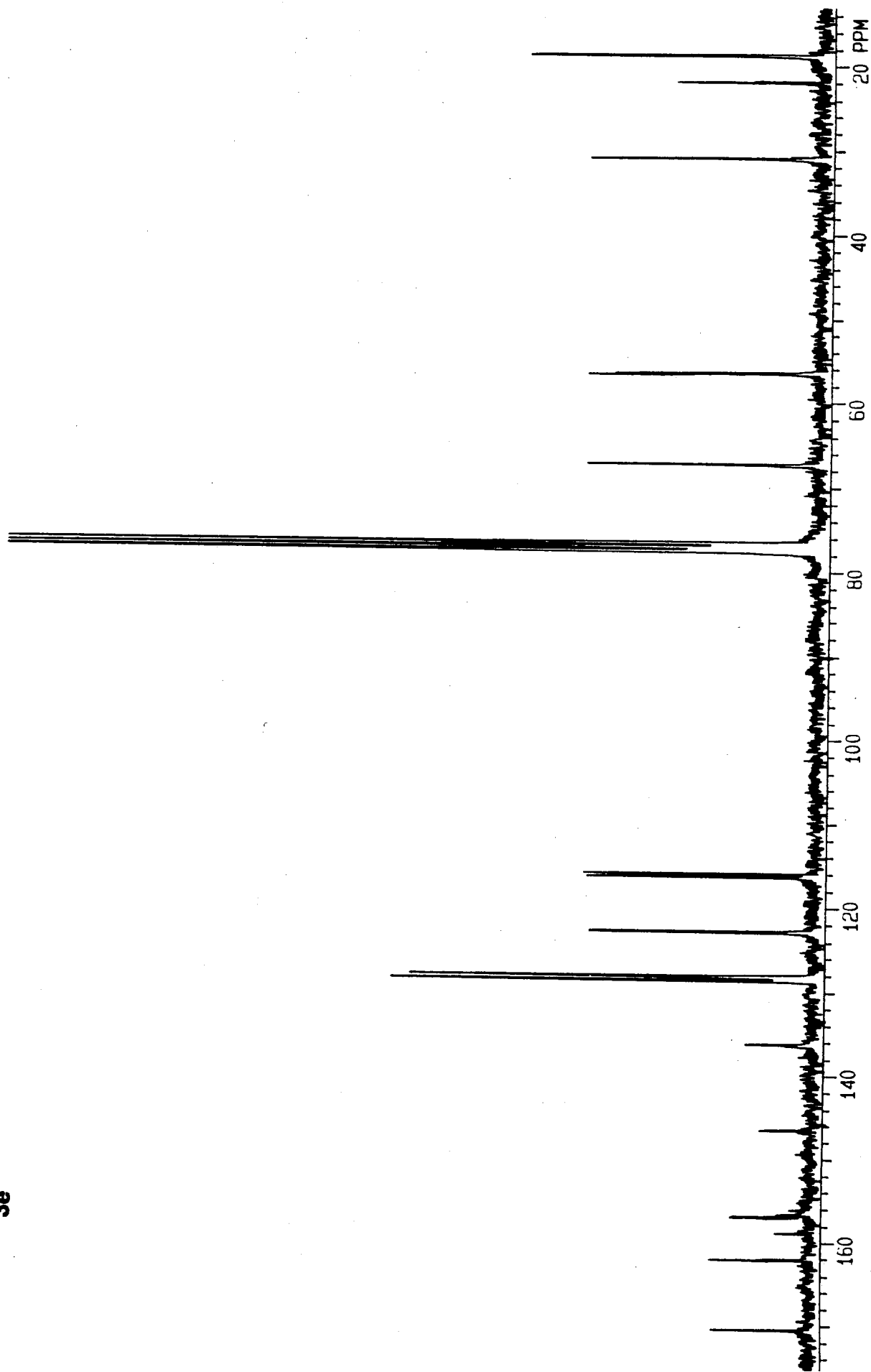
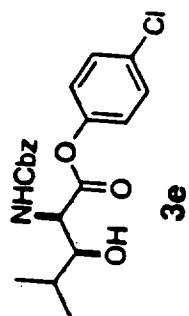
Peak	Time	Area	Area %
1	5.16	725174	26.608
2	6.27	25326	0.929
3	6.78	9472	0.348
4	9.14	246655	9.050
5	12.84	815833	29.934
6	15.45	902986	33.132

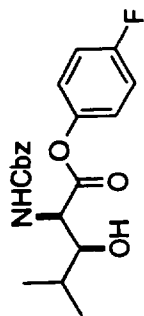
Totals :

2725446 100.000

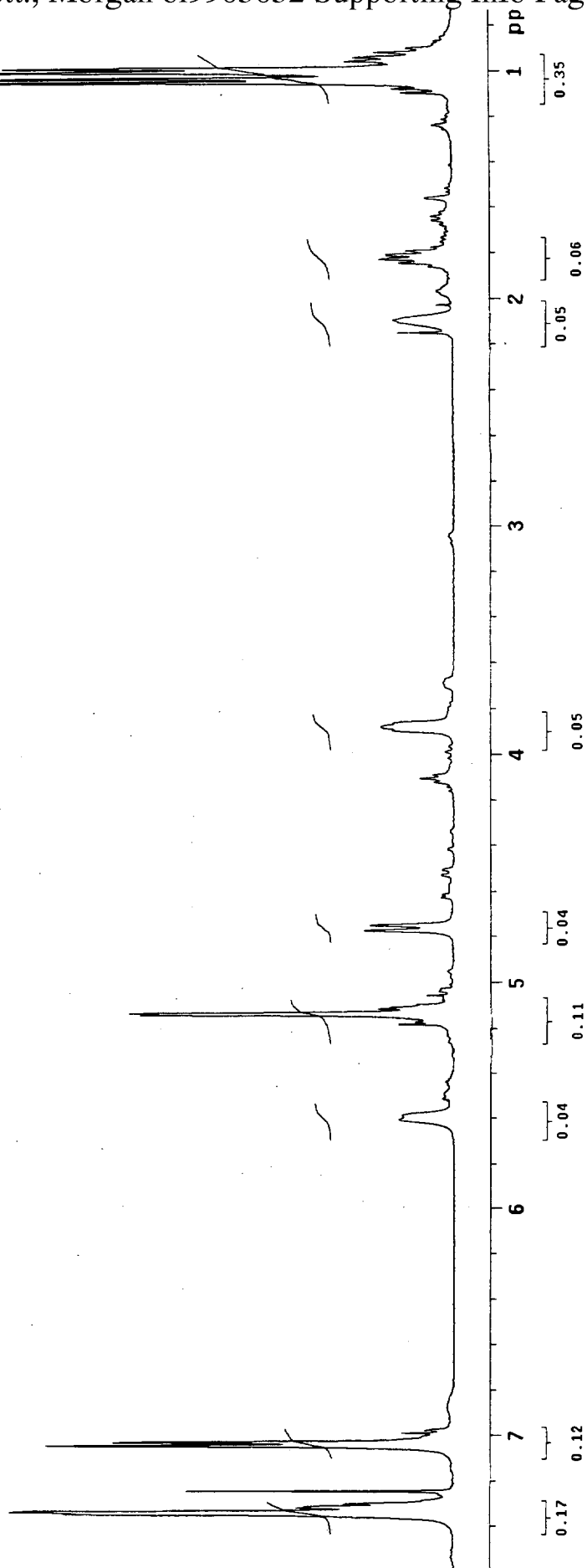


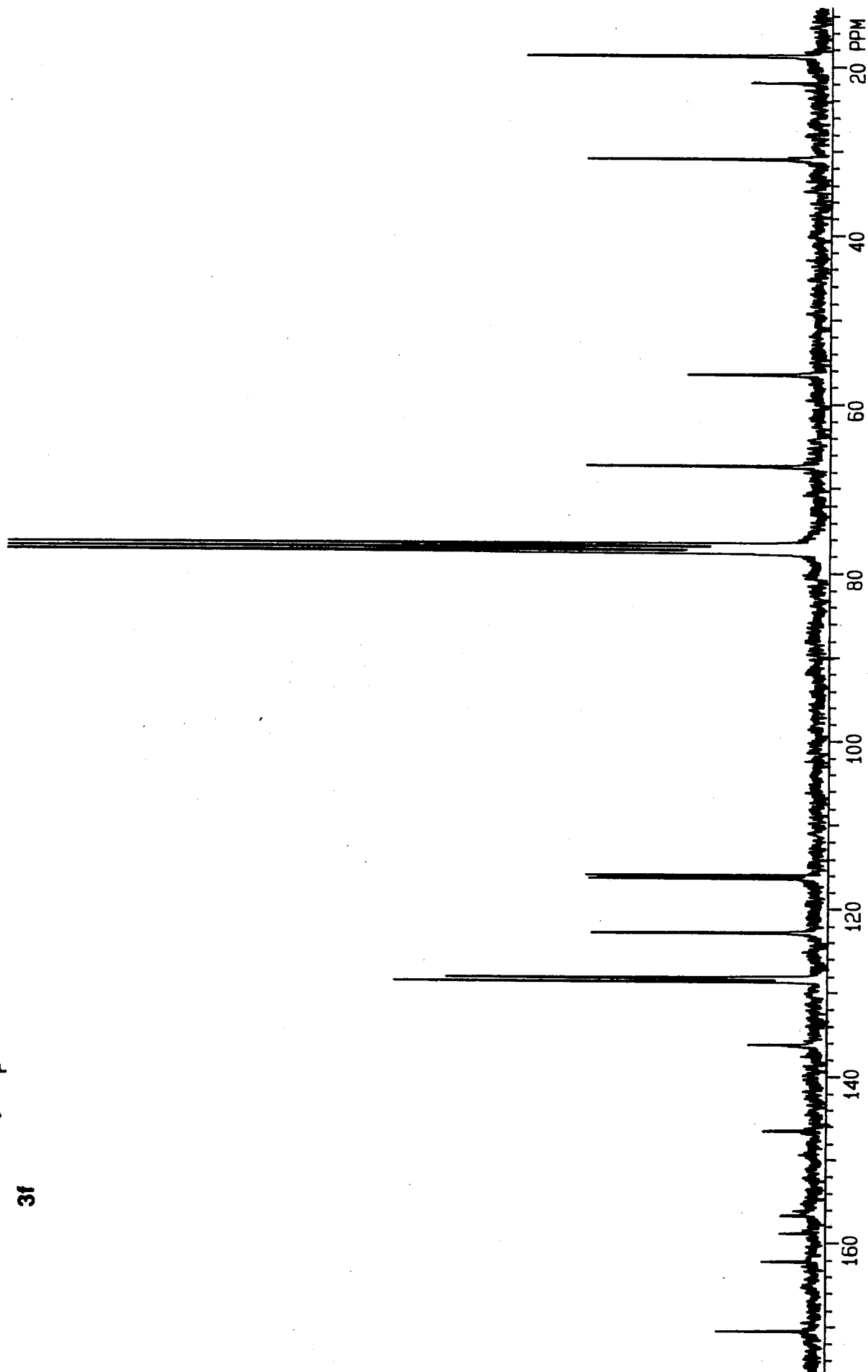
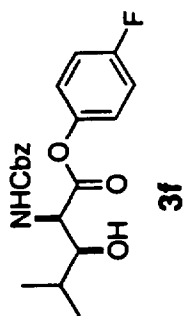


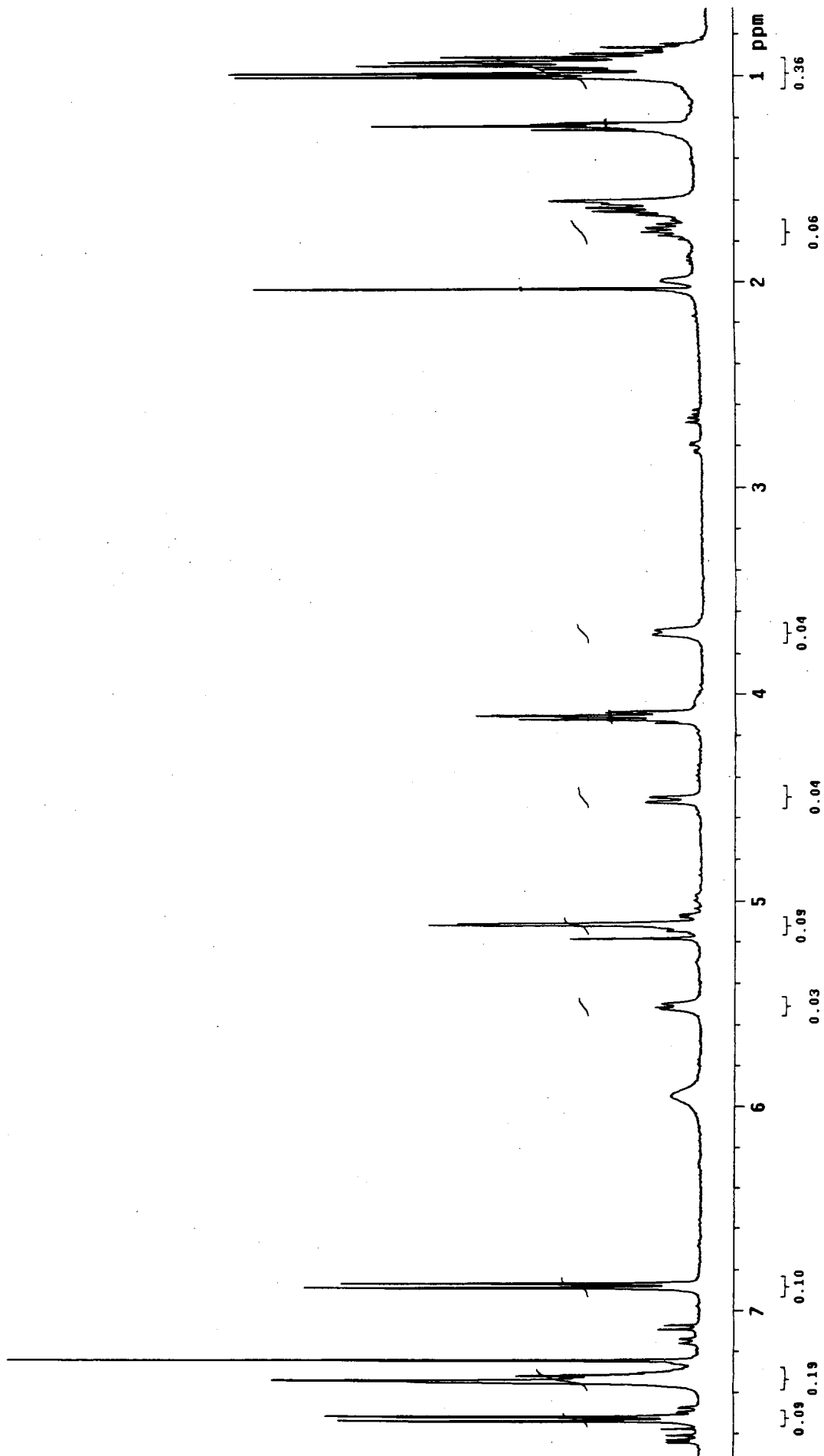
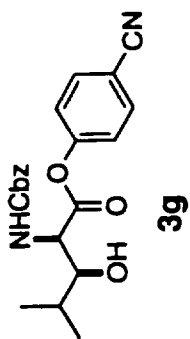


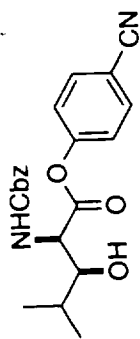


3f

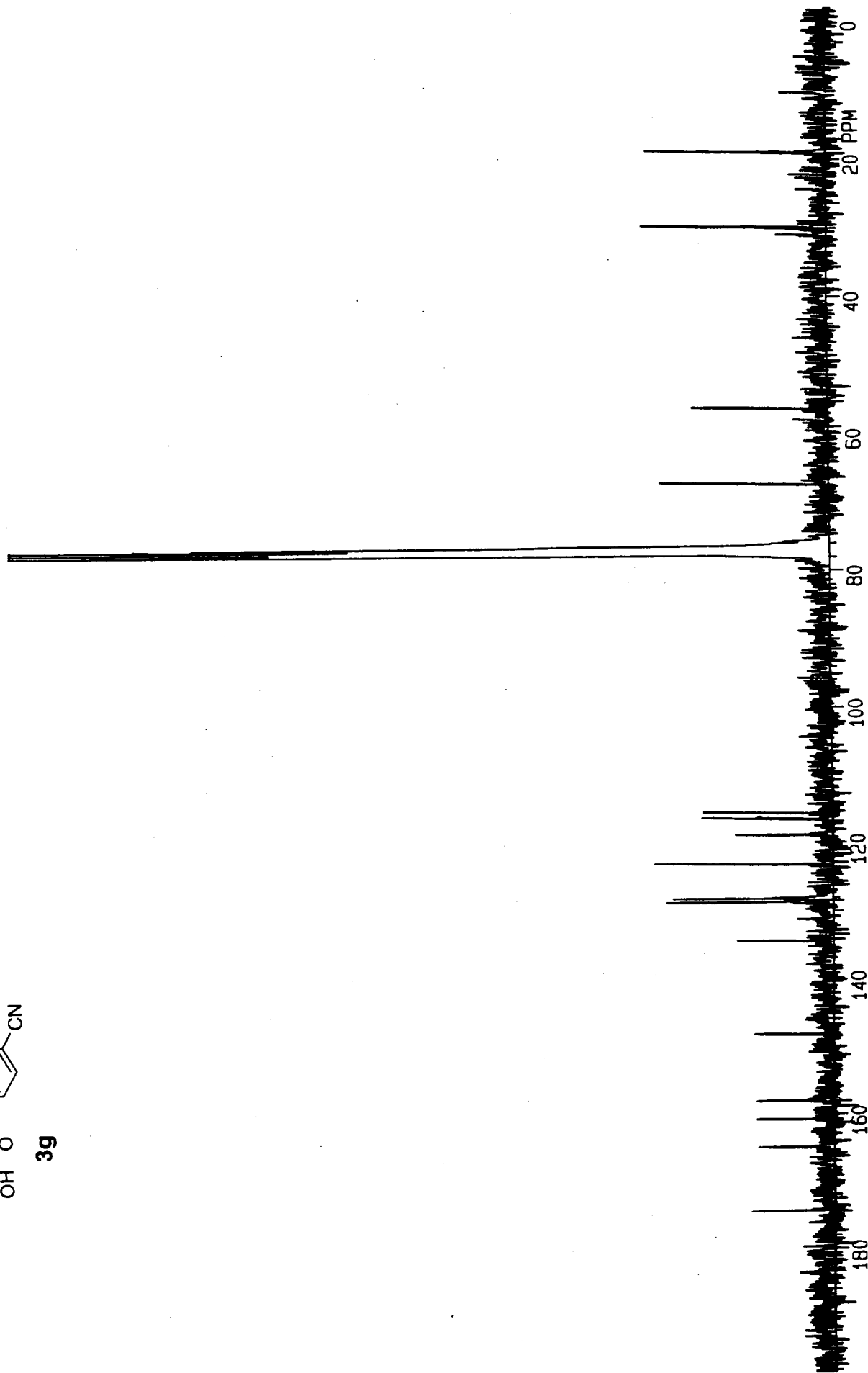


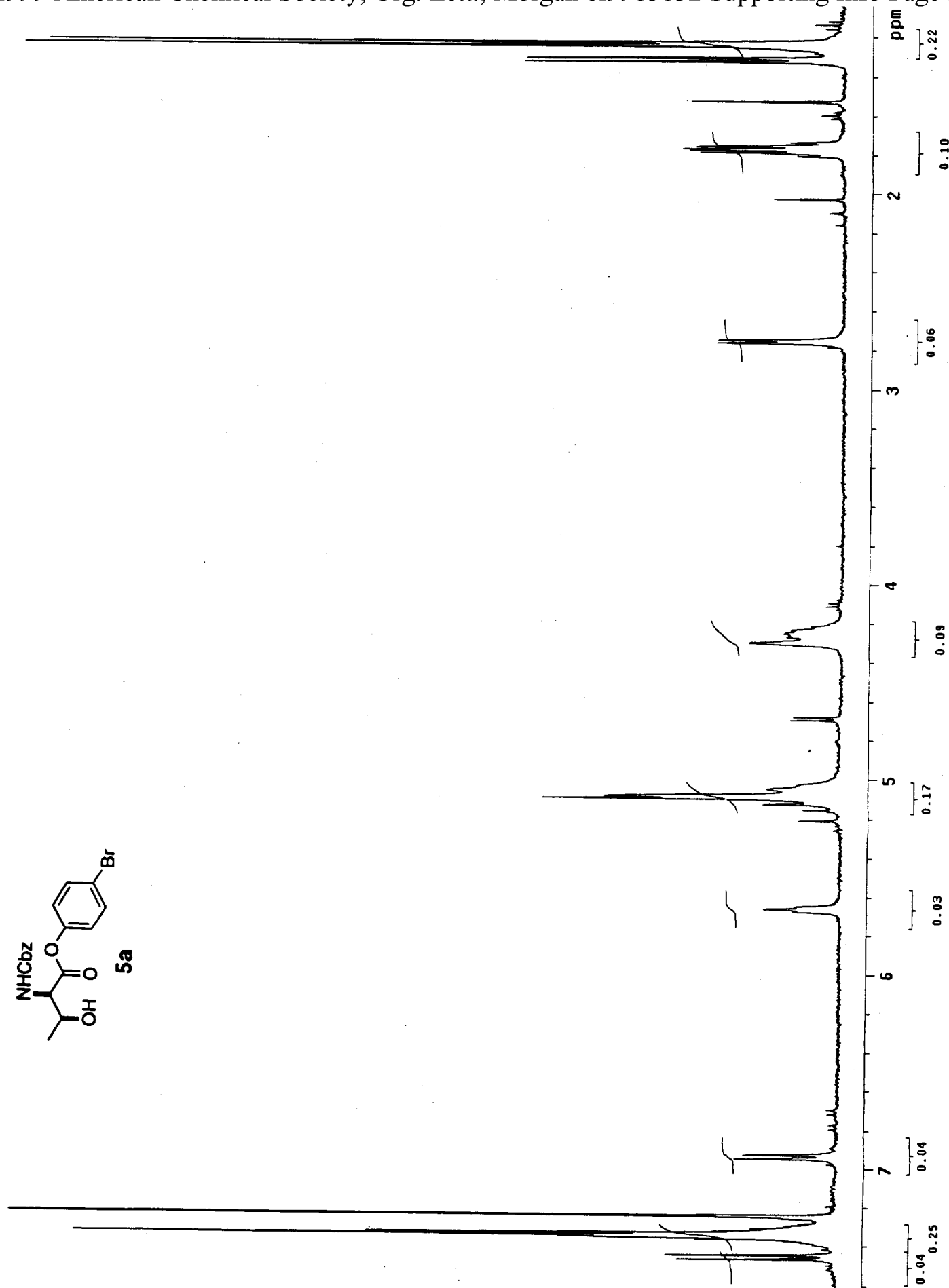
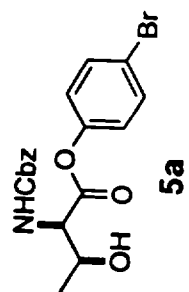


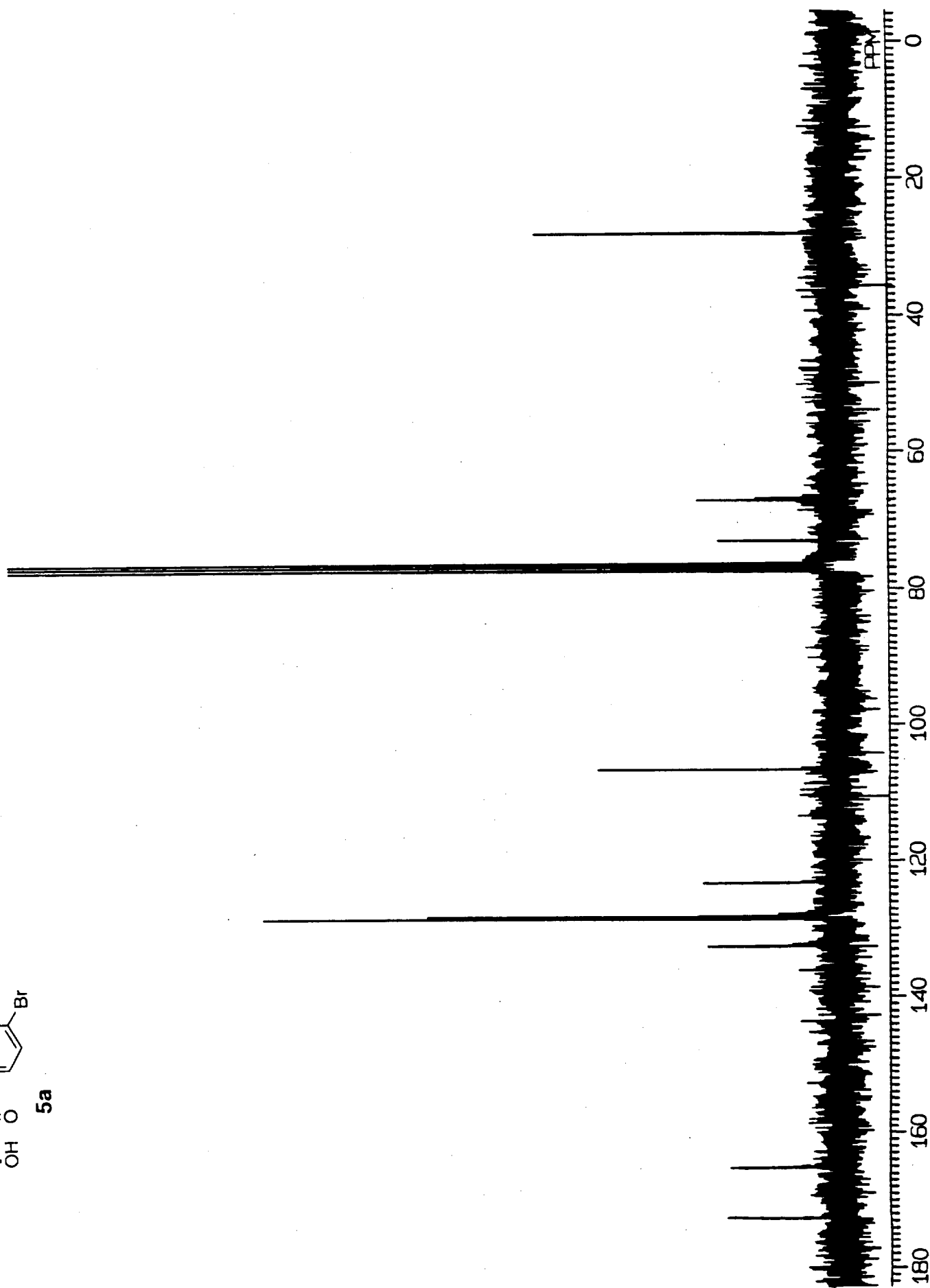
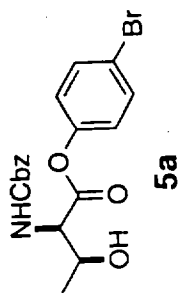




3g



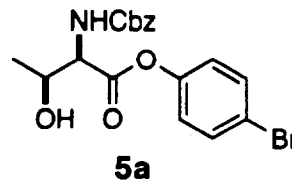




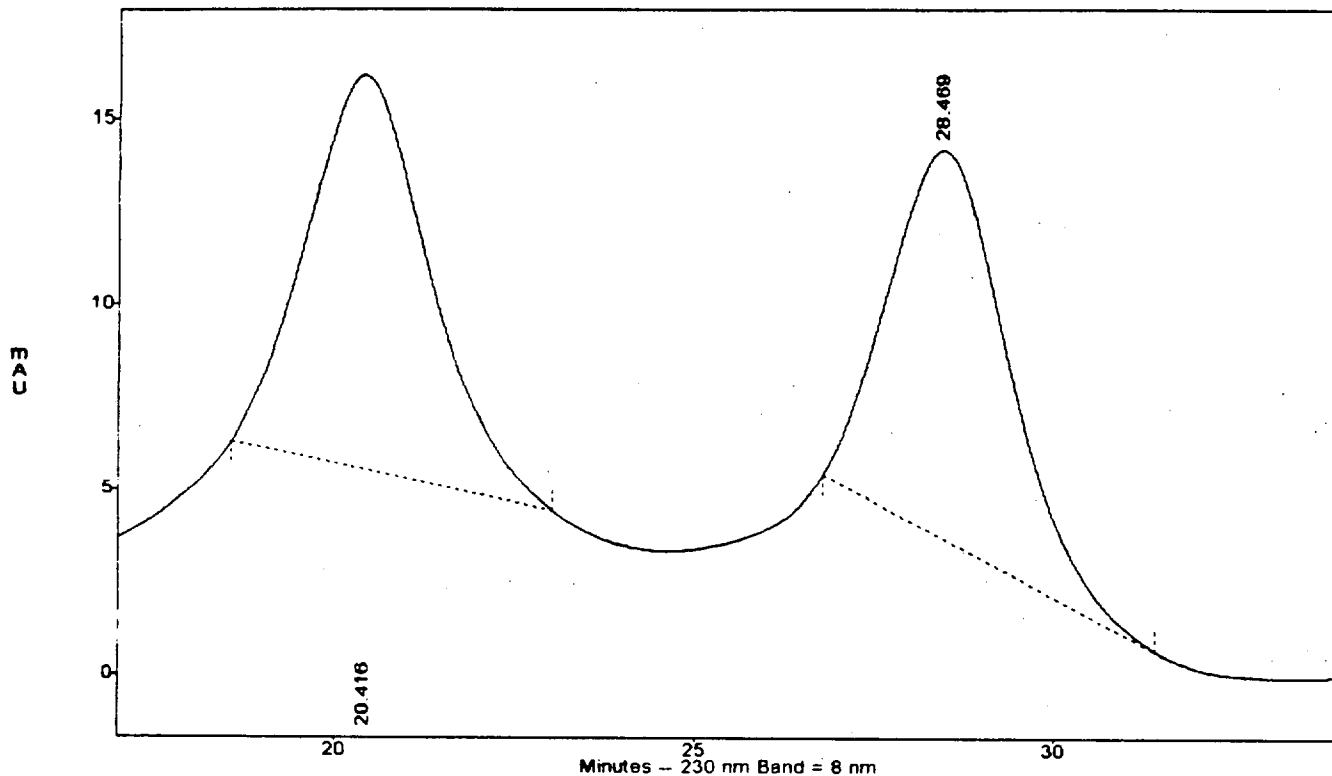
Threonine BromoPhenyl AA

4/14/99

File : c:\dynamax\chrom\Amorg1
 Method : c:\dynamax\methods\kdr.met
 Sample ID : amorg1
 Acquired : Apr 14, 1999 14:24:22
 Printed : Apr 14, 1999 15:09:33
 User : panehplc



c:\dynamax\chrom\Amorg1 -- Channel A, PDA Channel 1

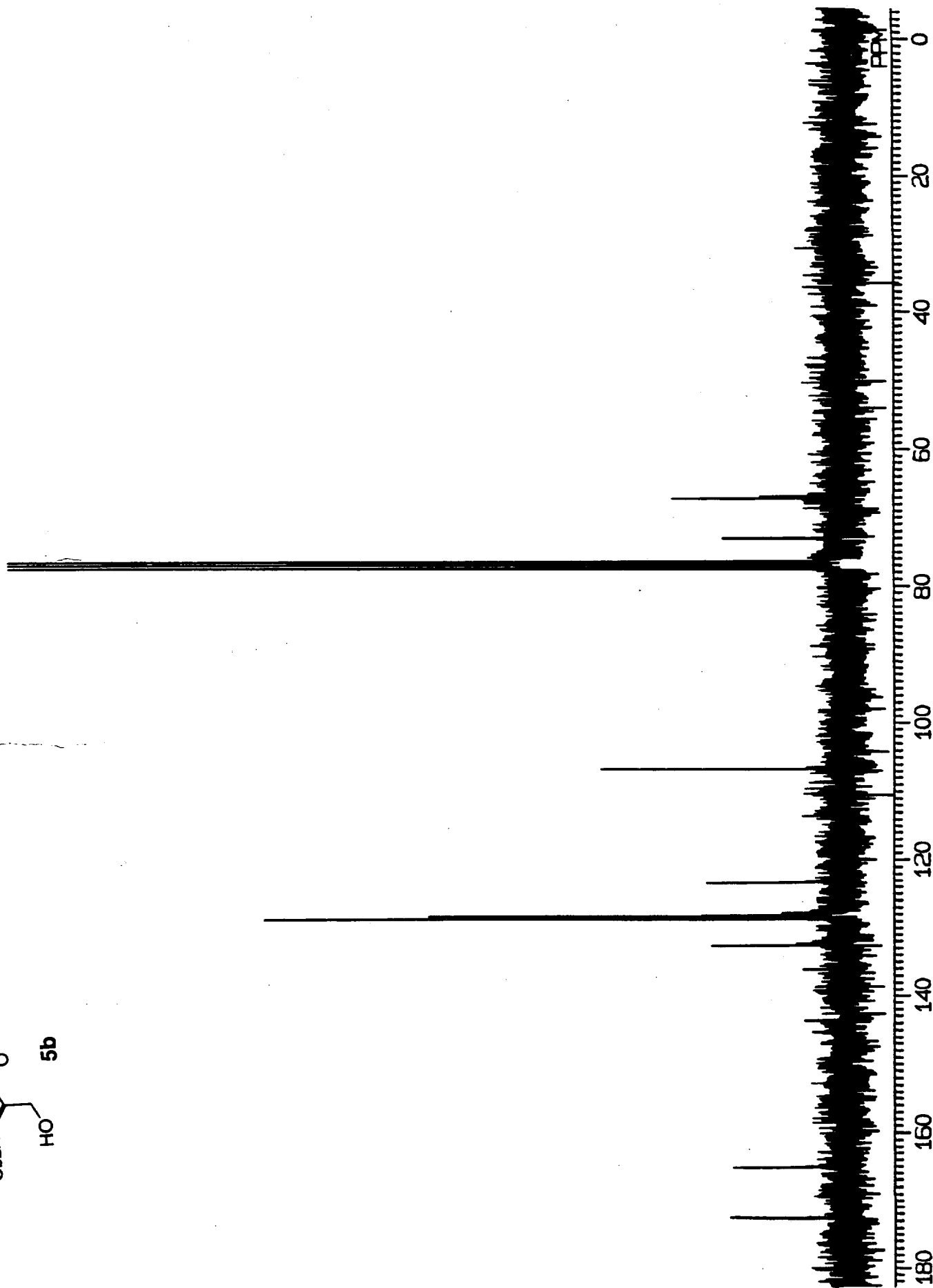
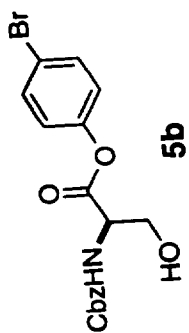


Channel A Results -- PDA Channel 1, 230 nm, 8 nm Band

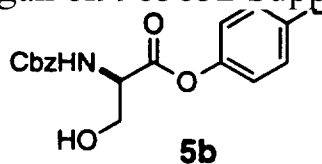
Peak	Time	Area	Area %
1	5.63	576066	11.883
2	7.01	1802074	37.171
3	20.42	1259060	25.971
4	28.47	1210818	24.976

Totals :
 4848018 100.000

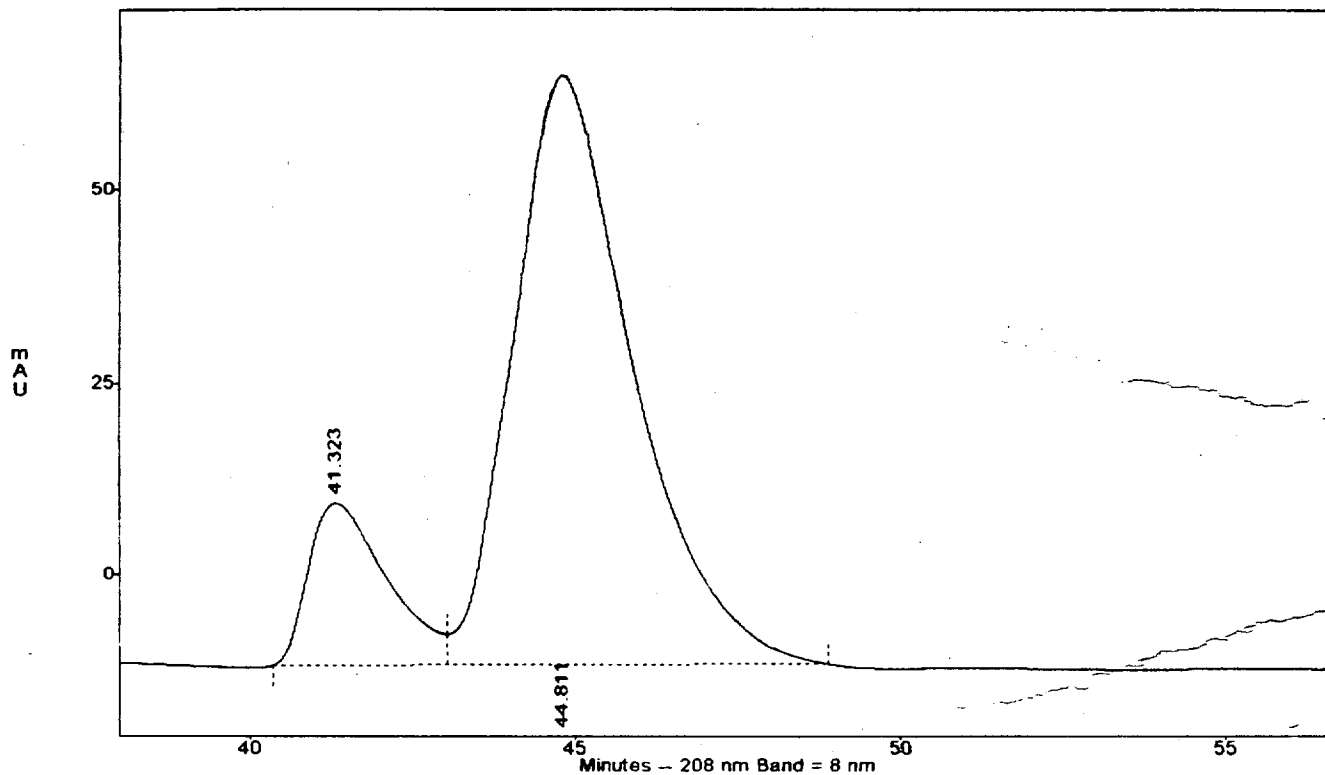




Abomb
 File : c:\dynamax\chrom\Serine
 Method : c:\dynamax\methods\kdr.met
 Sample ID : serine
 Acquired : Feb 15, 1999 16:59:15
 Printed : Feb 15, 1999 18:03:23
 User : panehplc



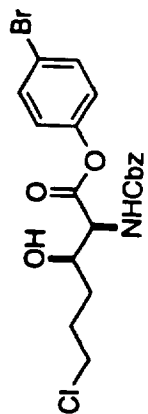
c:\dynamax\chrom\Serine - Channel A, PDA Channel 1



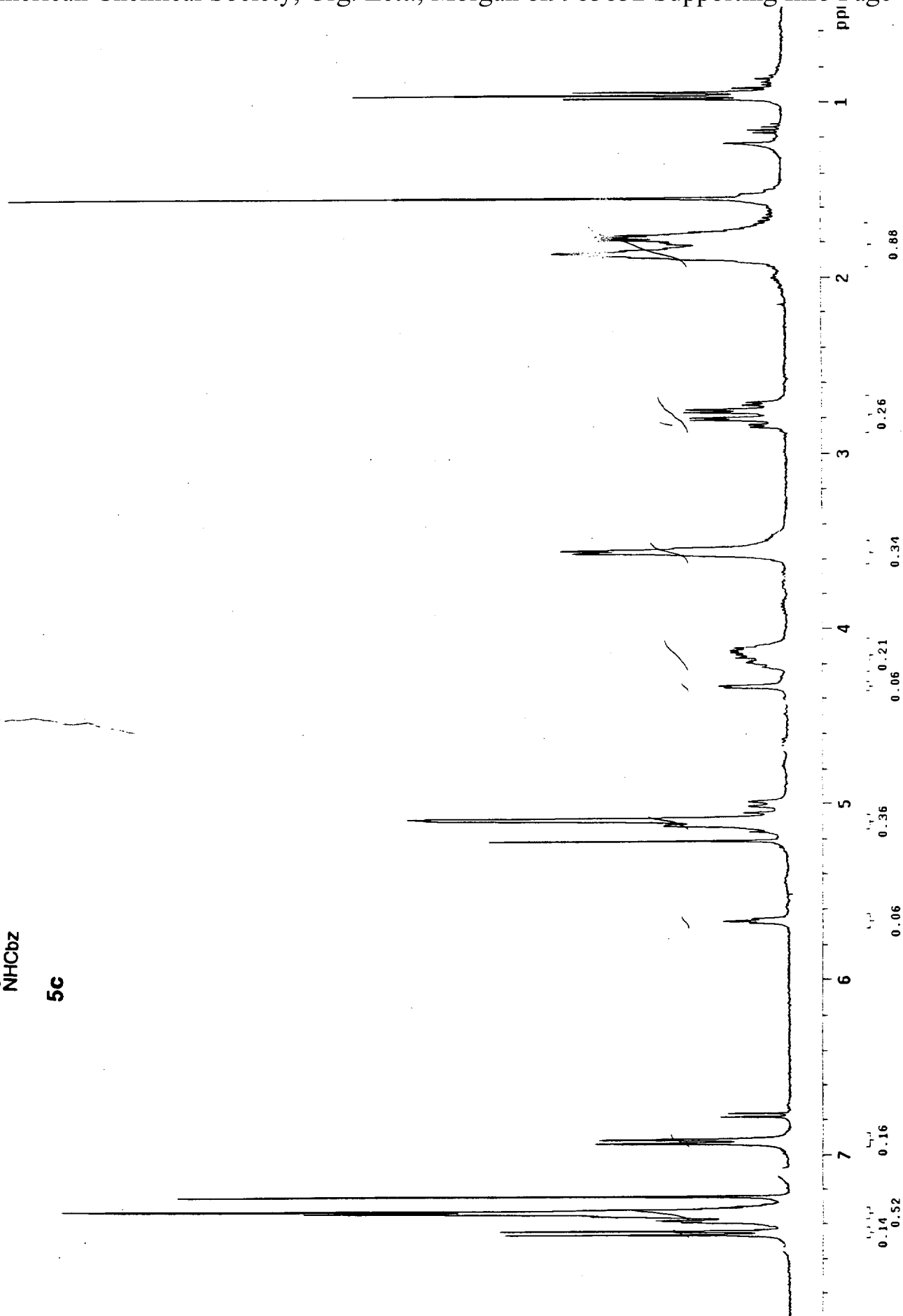
Channel A Results -- PDA Channel 1, 208 nm, 8 nm Band

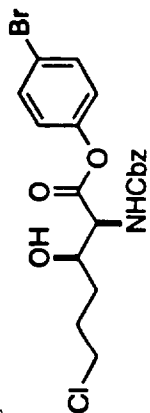
Peak	Time	Area	Area %
1	0.90	1789608	10.827
2	5.35	247989	1.500
3	6.36	2271767	13.744
4	7.46	331756	2.007
5	8.96	39266	0.238
6	30.11	256712	1.553
7	41.32	1772121	10.722
8	44.81	9819103	59.408

Totals :
 16528. 100.000

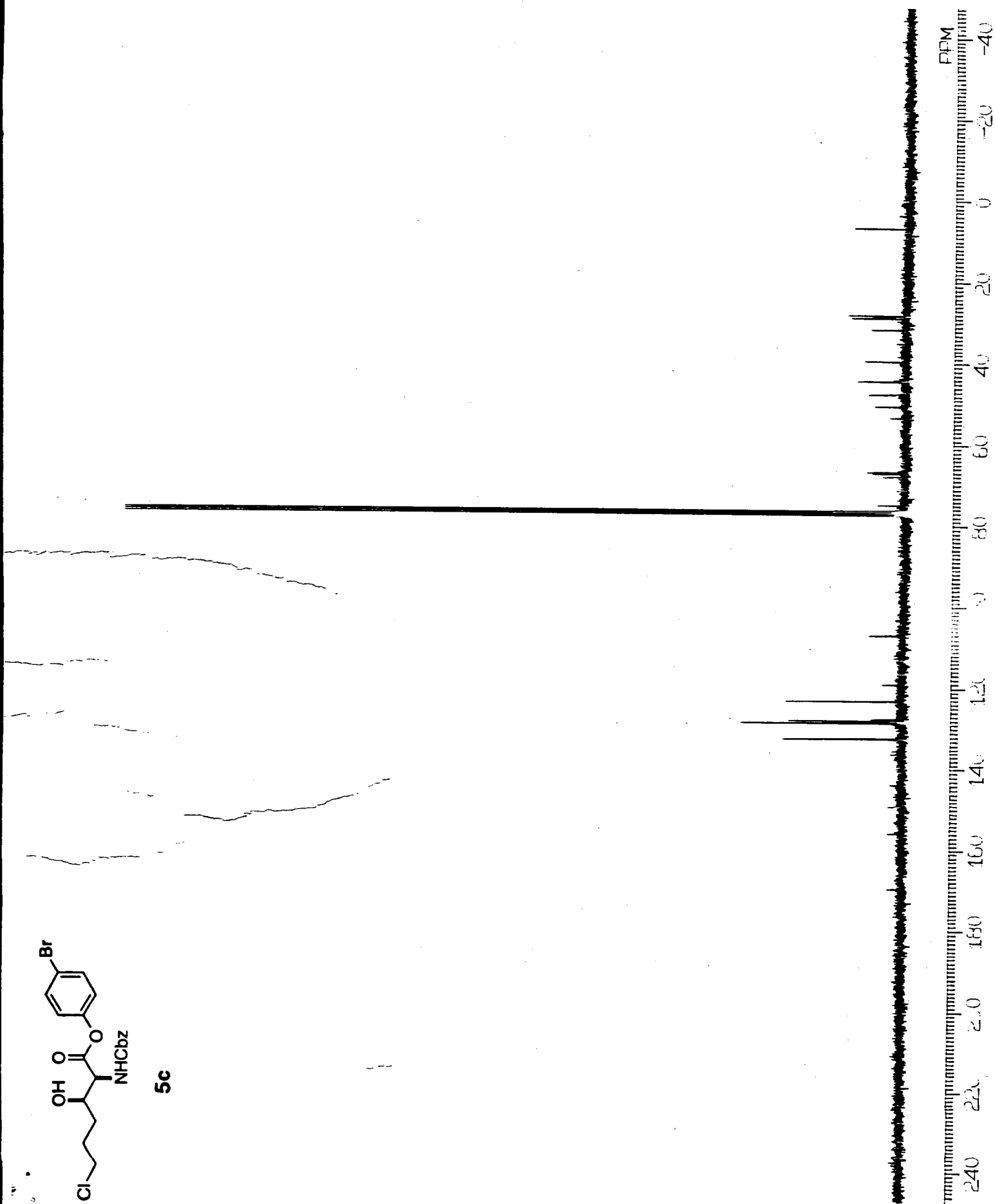


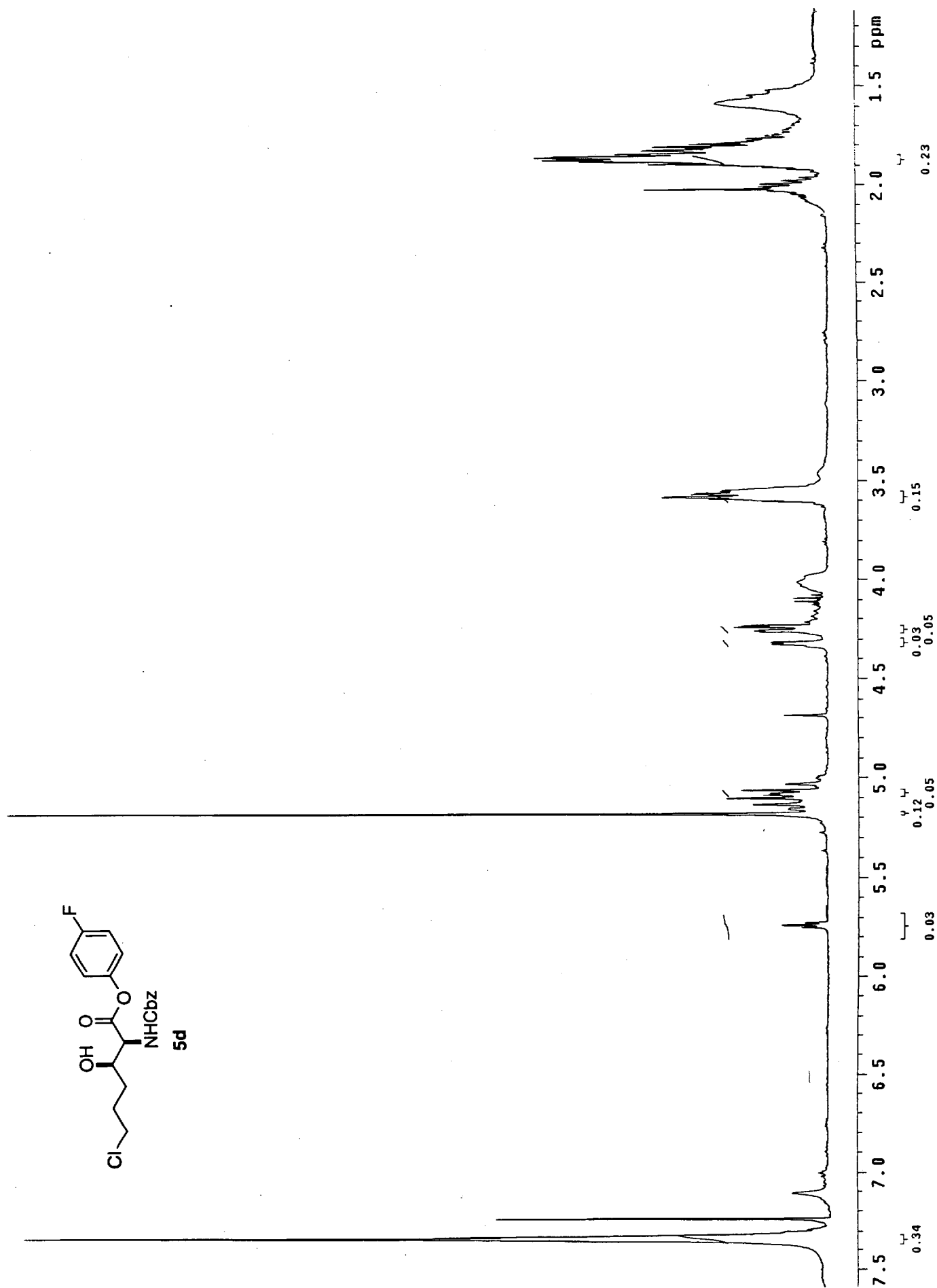
5c

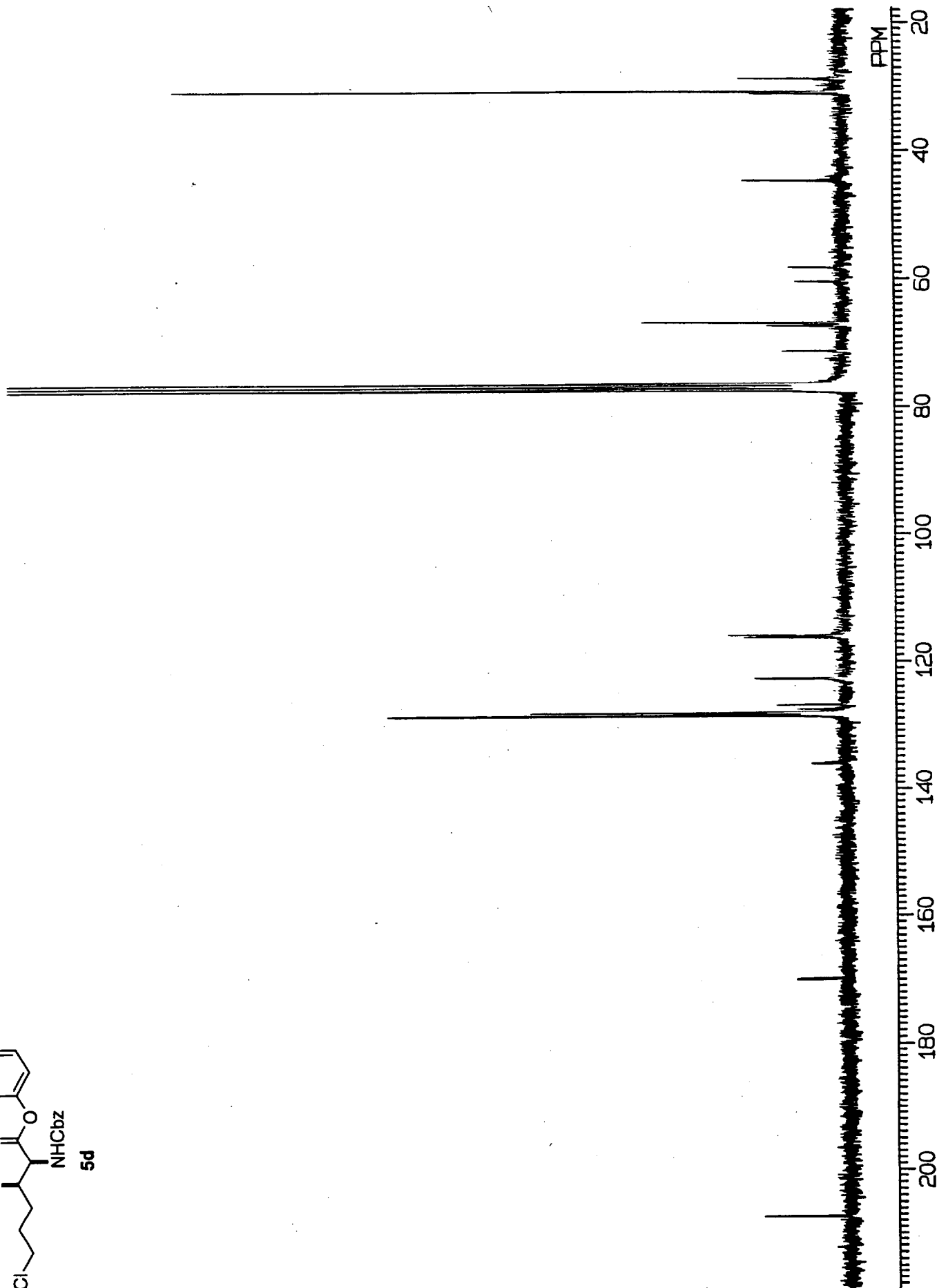
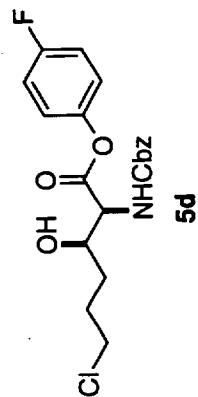


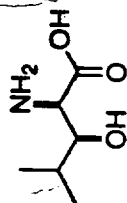


5c

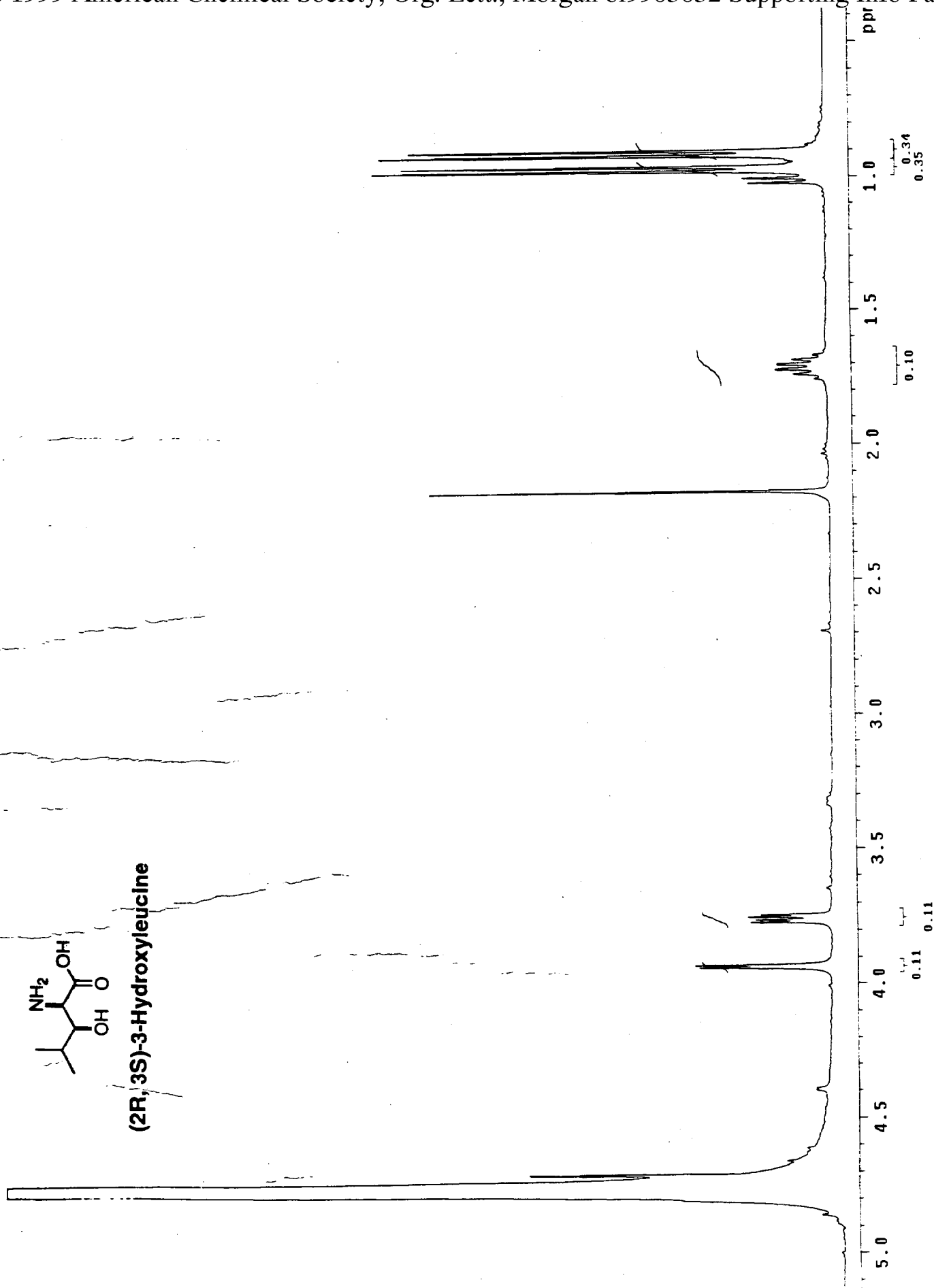


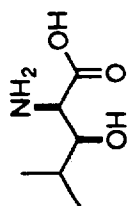






(2R,3S)-3-Hydroxyisoleucine





(2R, 3S)-3-Hydroxyleucine

